

---

# AN OVERVIEW OF OUR SUPPORT

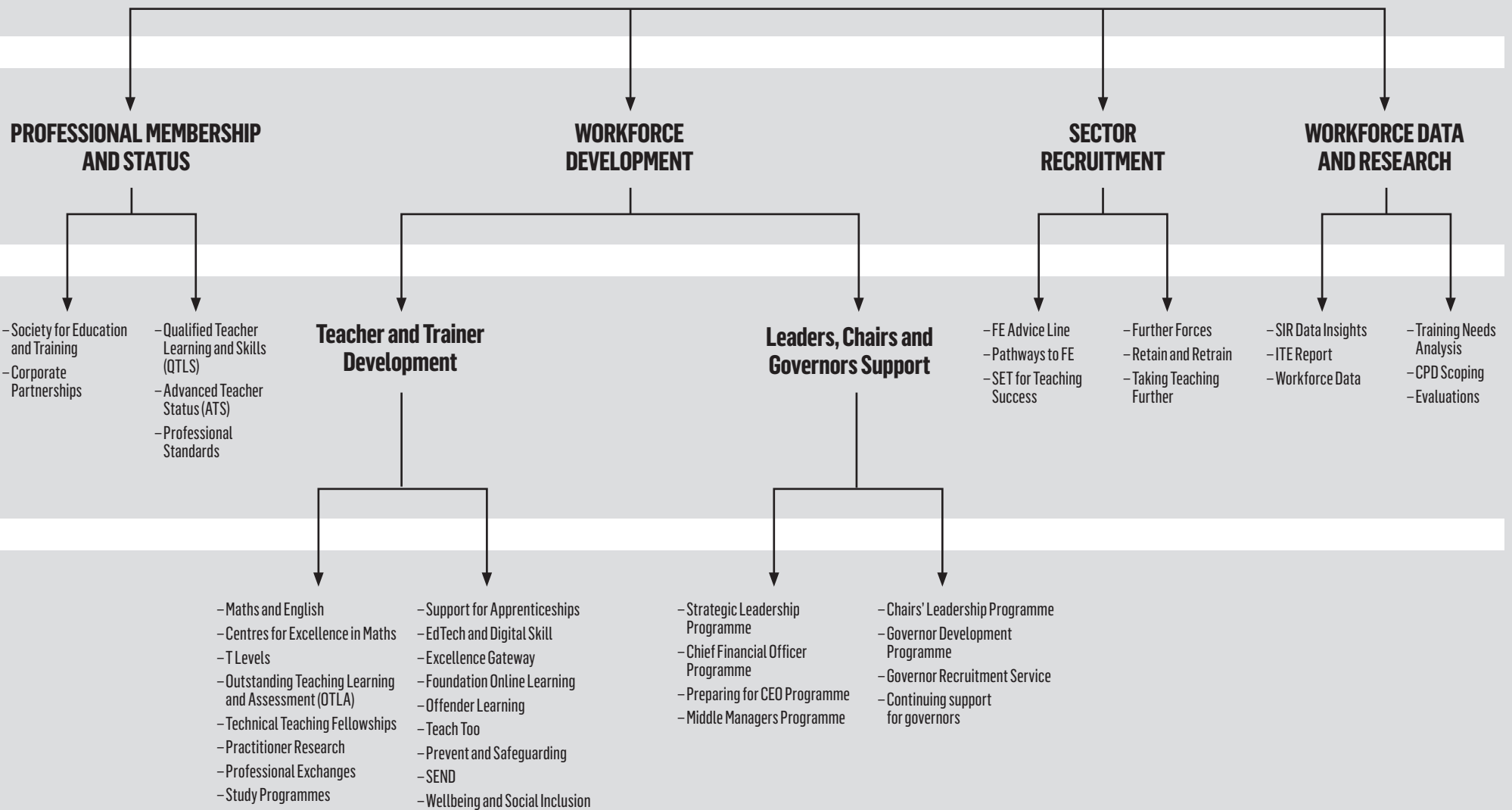


I want to publicly cheer about the advice from the ETF's FE Advice service. I had a long list of questions and they helped more than I could have imagined – it was like speaking to a well-informed friend. I would highly recommend.

GEMMA PRATT,  
MAYINSPIRE



# EDUCATION & TRAINING FOUNDATION



  
“

At Buckinghamshire College Group we consider engaging our staff in effective and relevant CPD a strategic priority. We are pleased to have taken part in a range of the Education and Training Foundation's CPD events including English and Maths development and the MA / MPhil Programme, as well as supporting a number of teachers through the QTLS process.

Joining the Society for Education and Training as a corporate partner reinforces our commitment to attract, retain and develop a professional, self-disciplined and ambitious workforce. In our pursuit of excellence we strive to have consistently good teaching, learning and assessment resulting in high student outcomes. One of the success indicators for this is CPD, which inspires personal growth, progression opportunities and staff satisfaction.

KAREN MITCHELL, PRINCIPAL AND CHIEF EXECUTIVE,  
BUCKINGHAMSHIRE COLLEGE GROUP

”  

---